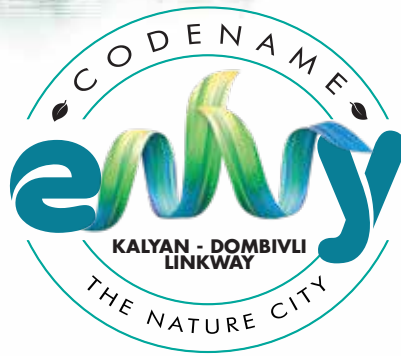


A KALYAN - DOMBIVLI BESTSELLER
A RARE OPPORTUNITY. JUST LIKE NATURE!



the **7**
blessings



Co-authored by





preface

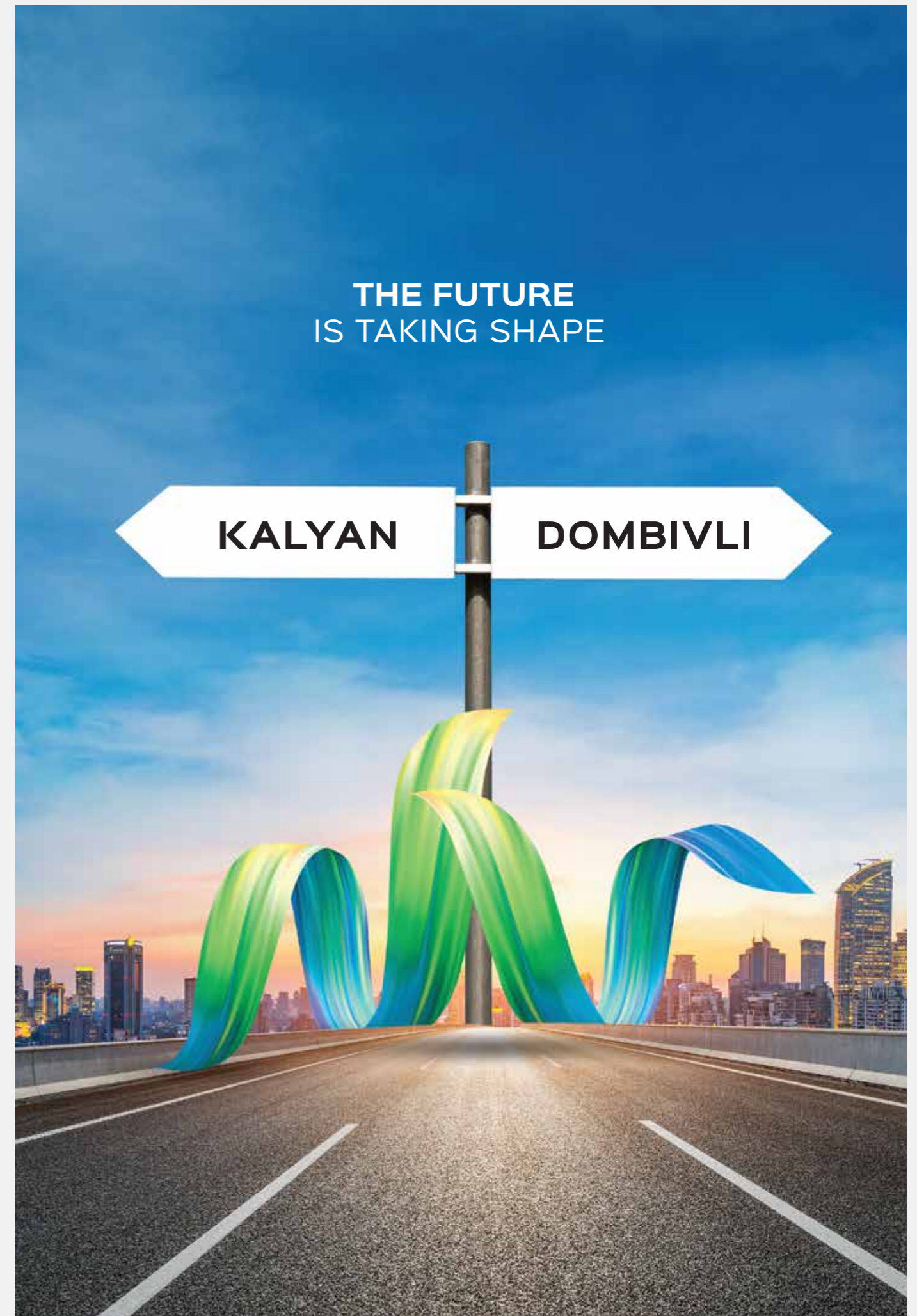
In today's ever-evolving world, the preservation of nature and green spaces is the thread that binds us to a thriving planet. Through these pages, we explore the vital significance of safeguarding our environment – an appeal to cherish, protect and rekindle our profound bond with the natural world. Let this journey inspire a collective commitment to preserve the irreplaceable gifts bestowed upon us by Mother Nature for generations to come.



— the blessing of —
a linkway

The Kalyan-Dombivli Linkway is where the future is taking shape.
It is poised to be the corridor of growth with numerous ongoing
and upcoming developments along the way.

Be a part of this destination and take the route to a rewarding tomorrow.






— the blessing of —
city & greenery


Disconnect from the city, only to reconnect back in greener ways. Located in the heart of Kalyan on the **Kalyan-Dombivli Linkway**, discover a vast green paradise, right on the main road just 12 minutes away from Kalyan Railway Station & 18 minutes from Dombivli Railway Station where soothing views of lush landscapes, symphony of chirping birds, and myriad shades of green bring a sense of harmony.


With nature integrated in every aspect of the project, it will provide a rich and peaceful environment and provide the perfect work-life-nature balance – a true blessing indeed.

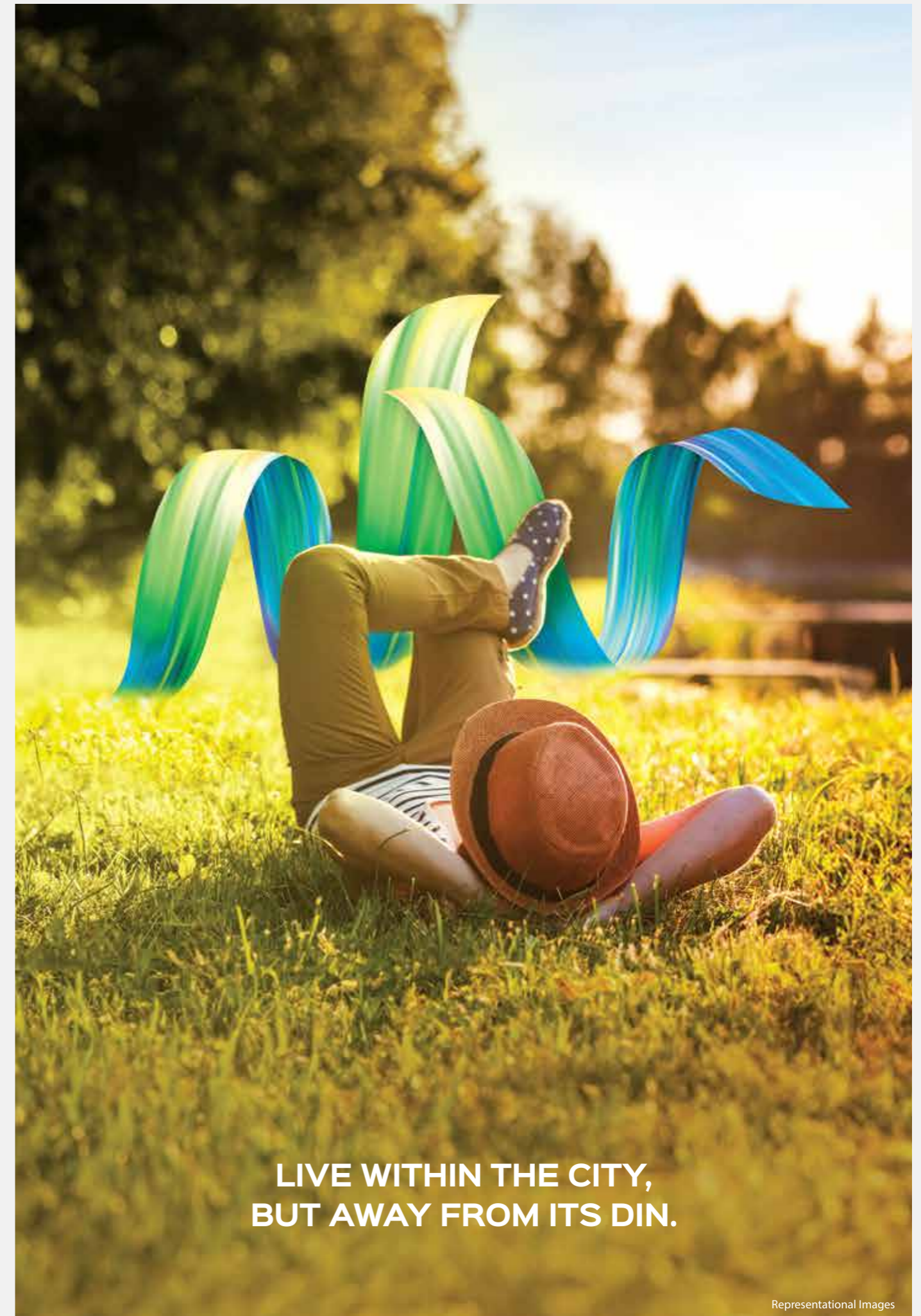


 Acres Of Balanced Development

 Lavish Clubhouse

 Thoughtful Amenities

 High-Street Promenade



**LIVE WITHIN THE CITY,
BUT AWAY FROM ITS DIN.**

Representational Images



— the blessing of —
superior connectivity

The city-centric location of the project will result in excellent connectivity with well-developed transportation networks, seamlessly linking residents to major urban centers and enhancing accessibility for a thriving community.

Connectivity Highlights:

 METRO LINE 5
& METRO LINE 12

 KALYAN
RING ROAD


 KALYAN STATION
REVAMP PLAN


 UPCOMING AIROLI - KATAI
TUNNEL ROAD

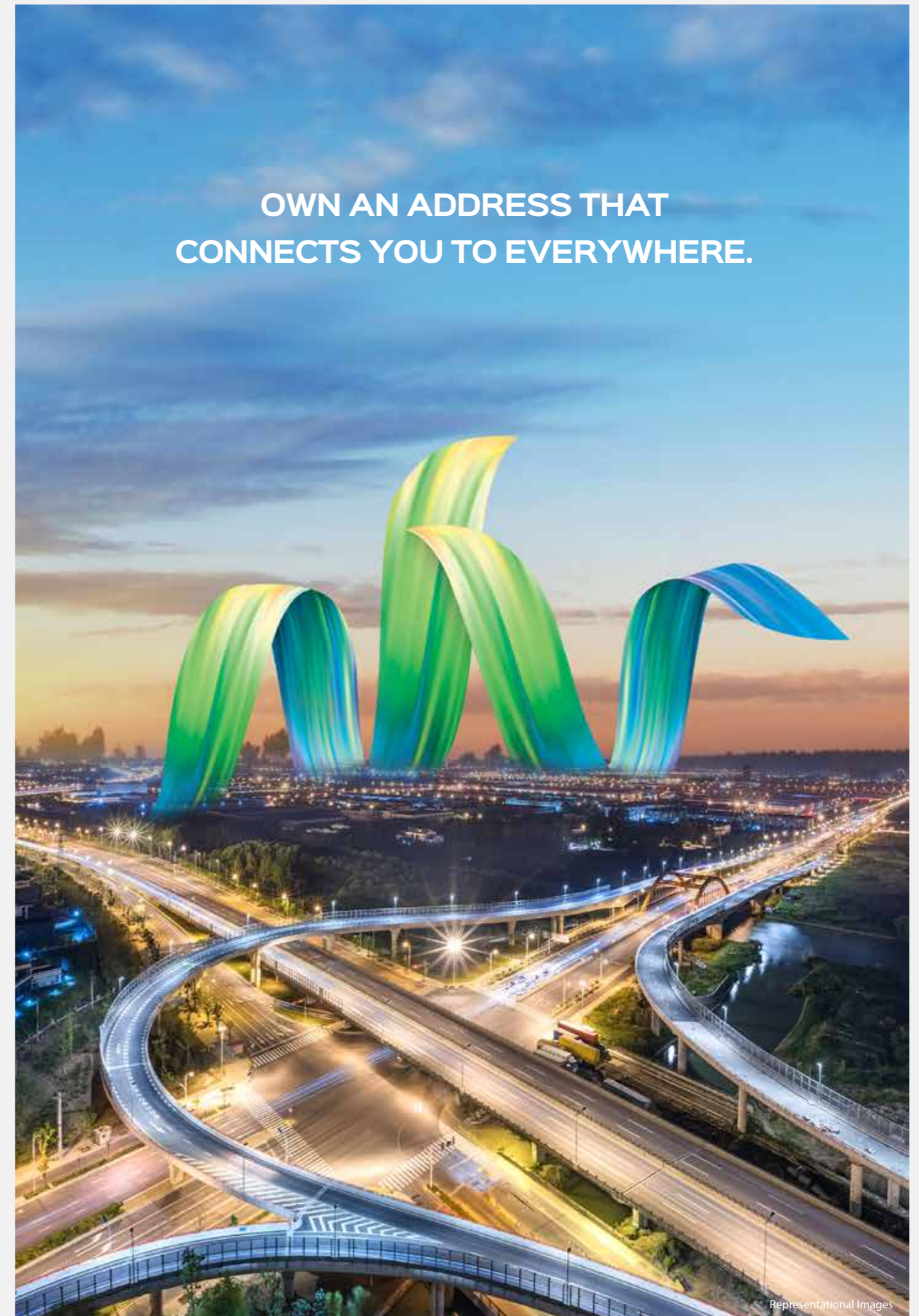
 VIRAR-ALIBAUG
MULTIMODAL CORRIDOR

 ENHANCED ROAD CONNECTIVITY
WITH 6 ECONOMIC HUBS

 UPCOMING
NAVI MUMBAI AIRPORT

 MANKOLI MOTHAGAON
BRIDGE

 AHMEDABAD MUMBAI
BULLET TRAIN





— the blessing of —
the finest facilities

The A-Grade social infrastructure along the **Kalyan-Dombivli Linkway** and around the region constitutes diverse educational institutions, healthcare facilities and recreational spaces. These well-established social amenities will contribute to a balanced and fulfilling quality of life for residents.

Close to the best social infrastructure

SCHOOLS

- Omkar International School
- Arya Gurukul School
- Saket Vidya Mandir English School
- Ideal School
- St. Jude's School
- St. Thomas School
- St. Mary School

COLLEGES

- Saket College Of Education
- Saket College Of Arts & Commerce
- Saket College Of Management
- Ideal College
- Pendharkar College
- Jondhale College
- Birla College

UNIVERSITY

- Mumbai University Sub-campus
- BITS Kalyan campus

HEALTHCARE

- Fortis Hospital
- Metro Speciality Hospital
- Meera Hospital
- AM-PM Hospital
- AIMS
- Upcoming Jupiter Hospital
- RR Hospital
- Amey Hospital

BUSINESS HUB

- Welspun One
Logistics Park at Bhiwandi
- ESR- Lodha Industrial
& Logistics Park

LIFESTYLE

- Dmart
- Metro Mall
- Xperia Mall
- Upcoming Rmall



**STEP OUT FOR SHOPPING
AND LEISURE EXPERIENCES.**



— the blessing of a —
healthy lifestyle

Immerse yourself in a nature-centric lifestyle with good air quality, lush landscapes and a green forest area in the neighbourhood. Surrounded by trees, the massive Clubhouse of the project integrates seamlessly within the realm of nature with numerous curated amenities to provide a thriving ecosystem for active and healthy living.

————— The Best Of Fitness & Wellness —————

Open Gym

Tennis Court

Yoga Area

Kids Play Area

Cycling Tracks

Swimming Pool

Badminton Court

Running Track

Toddlers Park

Manicured Parks

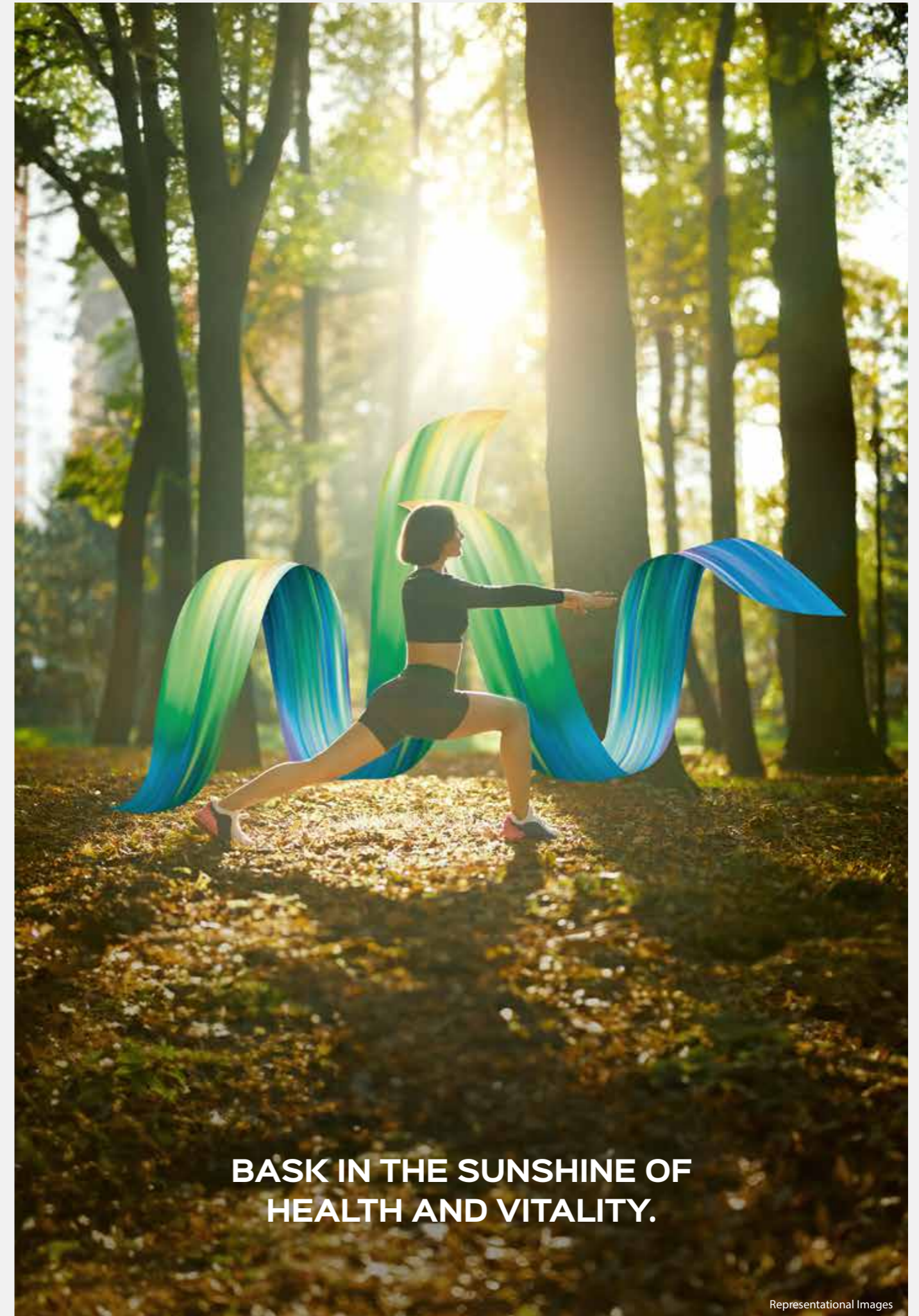
Cricket & Football Turf

Squash Court

Skating Rink

Senior Citizen's Area

Acupuncture Walkway



**BASK IN THE SUNSHINE OF
HEALTH AND VITALITY.**



— the blessing of —
luxurious spaces

Revel in the luxury of spacious residences that is thoughtfully planned and meticulously designed that blends with the natural world outside, fostering a sense of tranquility every day.

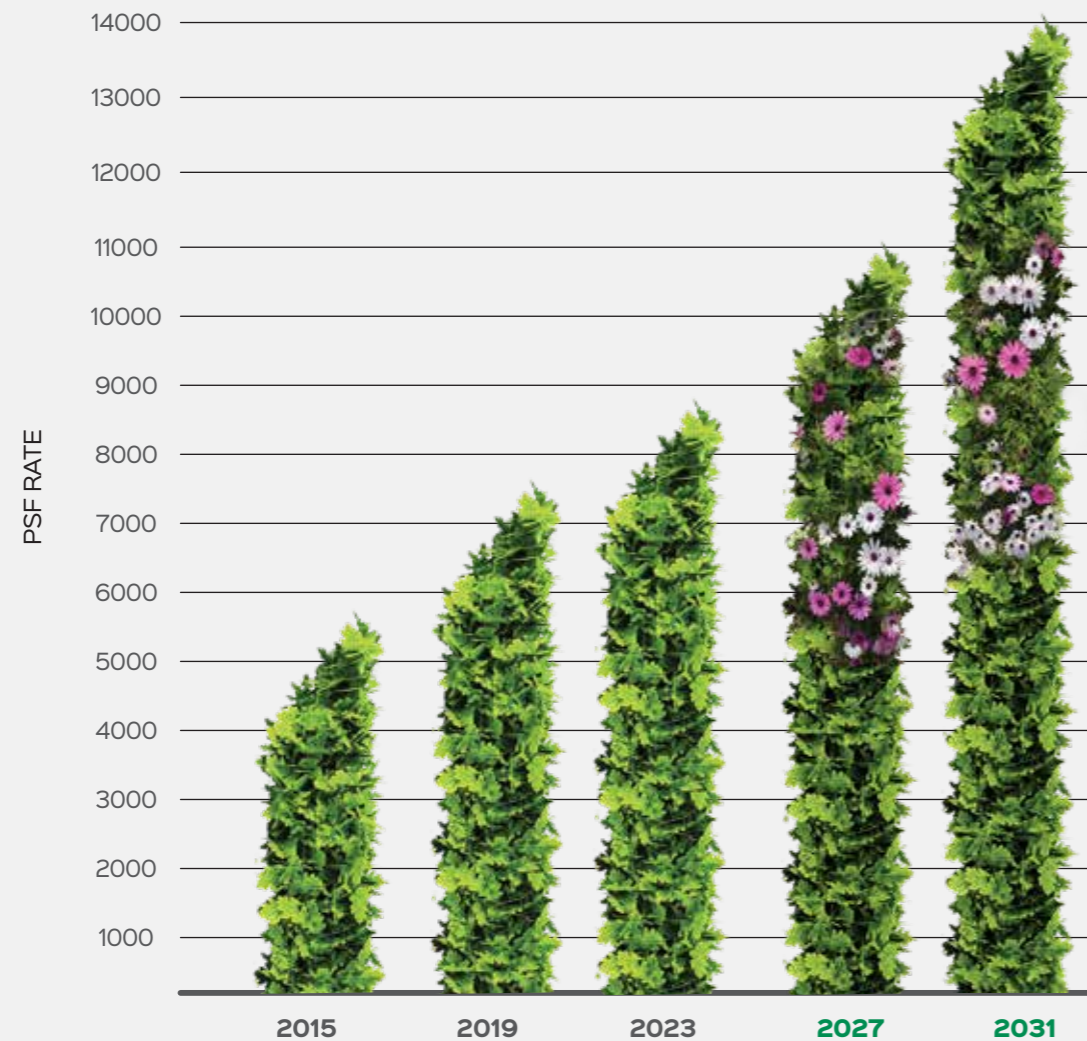
The homes will have abundant natural light and ample ventilation, with breathtaking vistas that invite the outdoors and make living a grand and luxurious experience.



**UNFOLD A NEW CHAPTER
IN LUXURY LIVING.**



— the blessing of —
promising returns



PRICE TREND IN
KALYAN EAST & ADJOINING AREAS

The graph presented above is intended for illustrative purposes only and does not guarantee future outcomes. The projections and trends depicted are based on current data and assumptions, which may change over time due to various factors such as economic conditions, technological advancements, regulatory changes, and unforeseen events. The creators of the graph assume no responsibility for any actions taken or decisions made based on its contents

Source : CRE MATRIX

Investing in a nature-themed development will ensure lucrative returns with rising demand for eco-friendly spaces, which is an emerging market trend towards mindful living.

It will also provide your future generation the right environment to grow and enjoy the fruits of an appreciating asset.

KALYAN EAST AND
ADJOINING AREAS
HAS SEEN AN
UPWARD TREND
OF APPROX.

63%

Makers of Urban Smart World



meets



Creators of Nature Inspired World

*A joint creation by
two real estate maestros.*

Get the best of both worlds with the coming together of two of the most renowned names in real estate - OYSTER & SAKET GROUP.

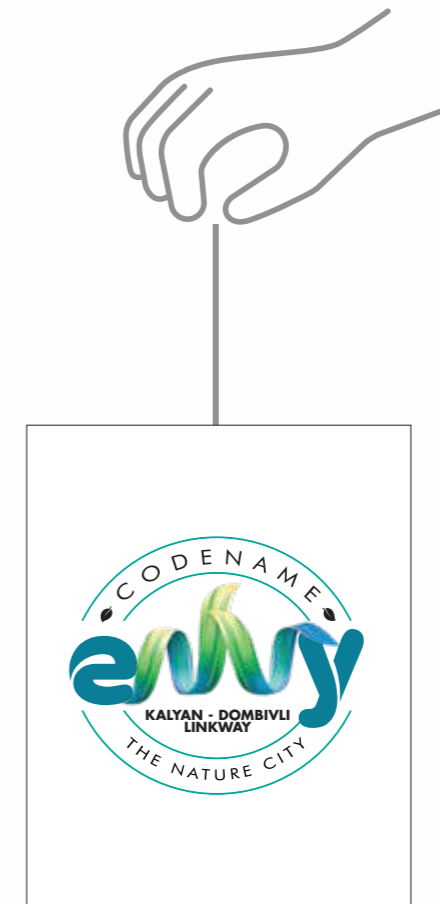
Saket Group is known for its high-rise developments, smart-home concepts and thoughtful design with sq.ft. utilization being the core.

Oyster is a name synonymous with lush landscaping, nature-based developments, creation of weekend homes and resort-themed projects.

With two of the best names collaborating, you can be assured of a home that is futuristic yet rooted in nature's bounty.

*the seeds for a
greener tomorrow.*

Let's commit to making our world a greener,
cleaner and happier planet. Sow these seeds for a
lush, flourishing future.



the pouch contains seeds.
You can remove it and plant it.
[#TheNatureCity](#)





Malangad Road, Dwarli, Kalyan East,
Maharashtra 421306

www.codenameenvy.com

